



## *2016 Annual Report*

*Township of Kalamazoo Police Department*

*Integrity - Pride - Compassion - Respect*

# 2016 Township of Kalamazoo Police Department Annual Report

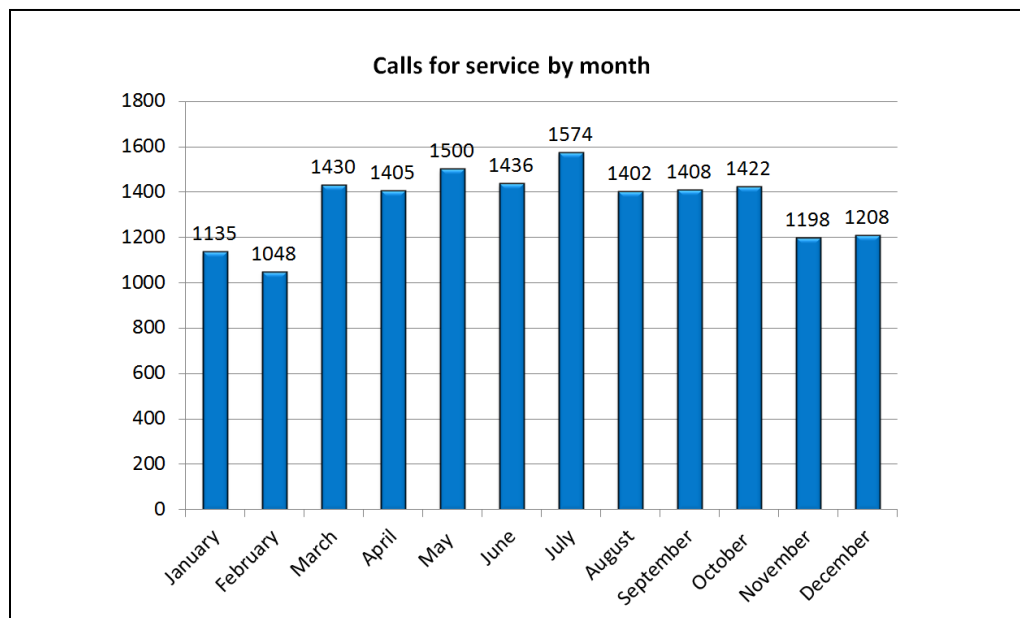
## Overview

The Charter Township of Kalamazoo Police Department, founded in 1952, strives to provide a full spectrum of police services to residents and visitors in both Kalamazoo Township and the City of Parchment. The Department and its employees have earned an excellent reputation in the community and among its criminal justice system peers as a highly skilled, compassionate, innovative and collaborative agency that puts service first. We strive to serve our citizens in a fashion that rises above and beyond the expected in each and every contact.

This report contains information on the activities of the Police Department in 2016. It is not meant to be a comprehensive report of all activities, but rather to provide information on certain key and frequently cited statistical data.

## Calls for Service

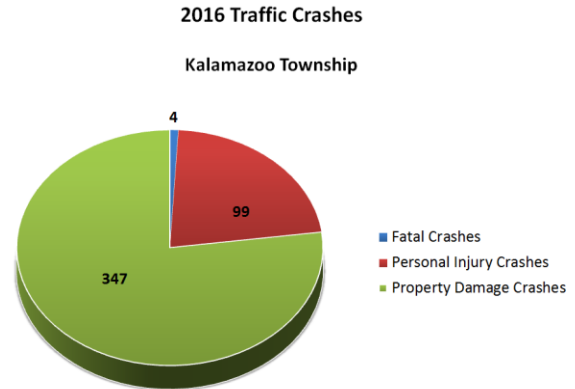
There were 16,202 police calls for service logged in the Township in 2016. These events are a mixture of citizen calls for service, calls referred from other agencies and officer generated on-view calls and activities. In addition, our dispatchers handled 2,101 fire and emergency medical calls for the Township of Kalamazoo and City of Parchment fire departments.



## Traffic

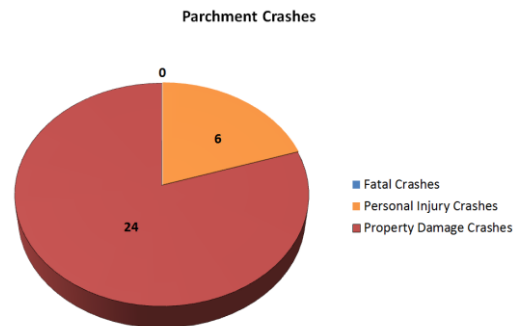
In 2016 in Kalamazoo Township there were:

- 347 traffic crashes overall
- 99 had personal injury
- 4 fatal



In 2016 in the City of Parchment there were:

- 30 traffic crashes overall
- 6 had personal injury
- There were no fatal crashes



Officers issued 2,214 citations this year.

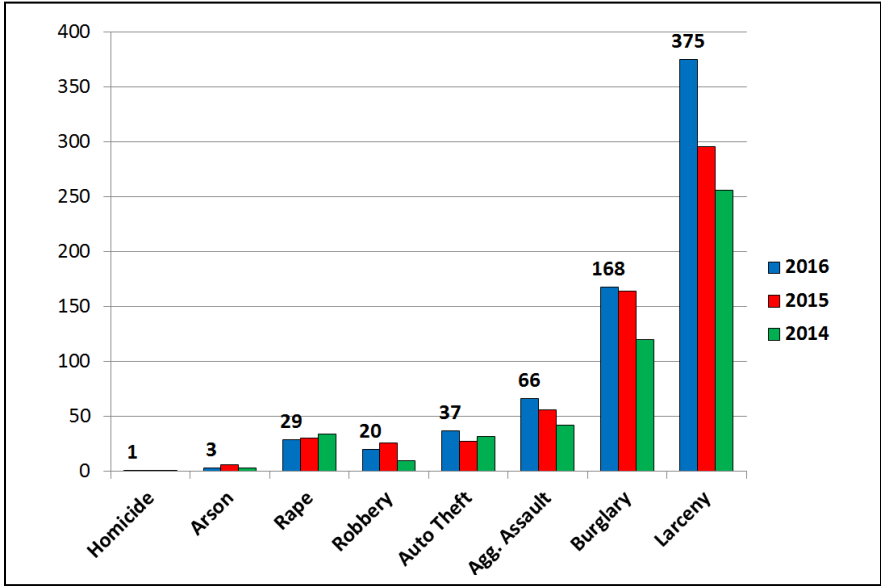
Officers made 65 Operating While Intoxicated (OWI) arrests this year. We continue to seek restitution through the courts as a part of the criminal prosecution in each OWI case charged by the prosecutor. Each judge has the option of ordering all, part or none of the expense reimbursement requested. Not all defendants ultimately pay the restitution ordered. In 2016 we received \$5,174.

Officers also issued 12 citations for open intoxicants in a motor vehicle and 11 for minors in possession of alcohol.

## Crime

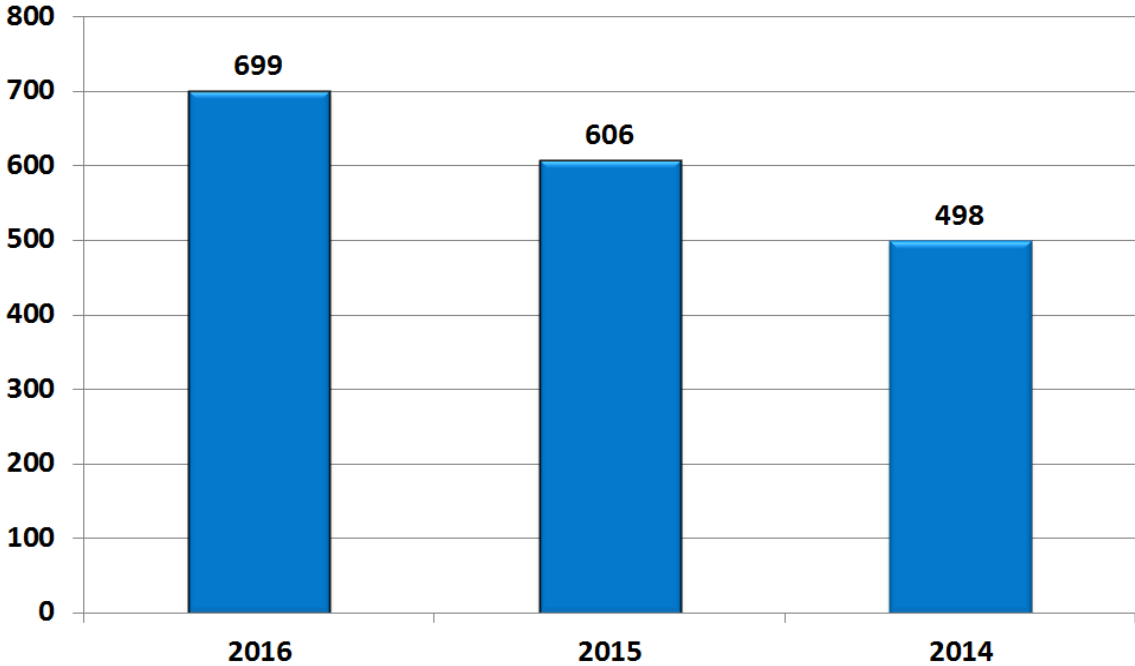
Information on crimes reported to or discovered by the Department is forwarded to the State of Michigan through the Michigan Incident Reporting System (MICR). Information is extrapolated from that system and sent to the Federal Bureau of Investigation (FBI) Uniform Crime Report (UCR). The method by which the UCR categorizes crime does not fit neatly with the way criminal acts are defined under Michigan law, so some conversion is necessary. The UCR divides crime into Part 1, or so-called serious crime (murder, robbery, forcible rape, burglary, aggravated assault, arson, and larceny-theft) and Part 2 crime (all other crime). On pages 10 and 11 I have included the FBI definitions for each of the Part 1 crimes. While this method of crime reporting is frequently criticized and perhaps misunderstood, it remains the basis for crime trend analysis today in the United States.

**Breakdown of Kalamazoo Township (only) UCR Part 1 Crimes**



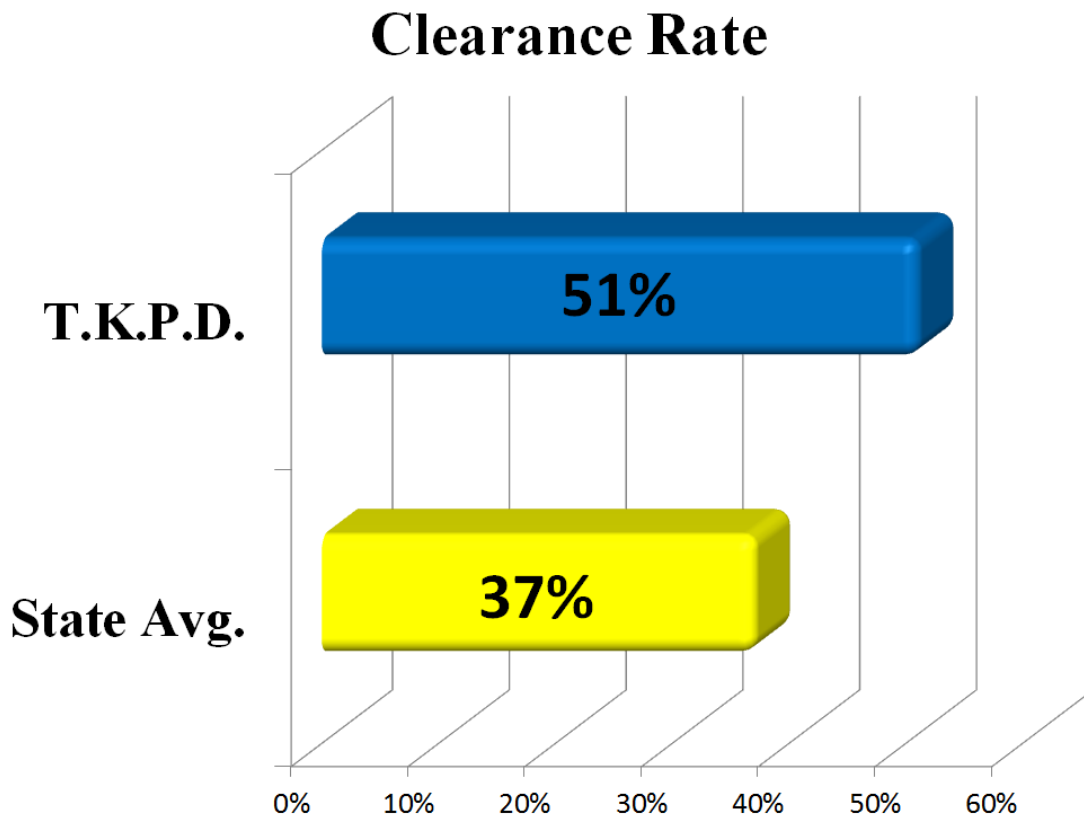
There were 699 Part 1 crimes reported or discovered in Kalamazoo Township in 2016 and 70 in the City of Parchment. Our philosophy remains to immediately address crime on both an individual case and trend basis, including close collaboration with neighboring agencies to spot trends that cross jurisdictional lines. The Intergraph records management system, which we share with the Kalamazoo Department of Public Safety and the Kalamazoo County Sheriff’s Department, is invaluable in this work.

**Part 1 Crimes**



## Clearance Rates

While reported crime statistics and classifications are frequently a matter of debate and some controversy, perhaps a more accurate measure of an agency's effectiveness is its clearance rate. While there are many variables and circumstances outside the control of a law enforcement agency, an agency's clearance rate speaks to the outcome of crime once it is discovered or reported. The clearance rate is a statistical measure of crimes solved based on common criteria provided by the state. The overall state average is 37%. I am pleased to report our clearance rate for 2015, the last year for which data are available, is 51%. This figure compares quite favorably with other agencies in our area and across the state. We believe it reflects our determination as an agency to investigate each crime as completely and thoroughly as possible.



## Civil Forfeiture

The Department closed four narcotics related civil forfeitures in 2016 for a total of \$7,067 in cash. By state law, narcotics forfeiture funds may only be used for law enforcement purposes. We use them to supplement drug enforcement efforts and for equipment purchases. These cases were originated by patrol officers in the course of investigations of the Controlled Substances Act.

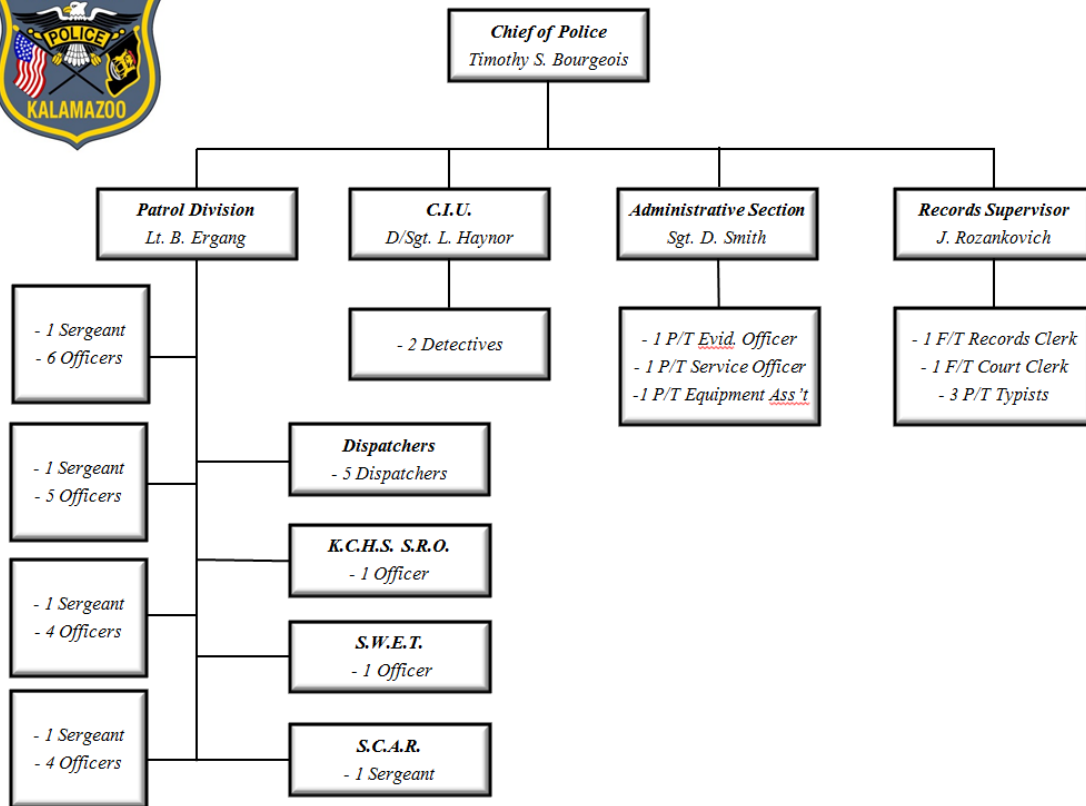
## Staffing

The department began 2016 with 31 sworn officers and ended the year with 31. The hiring environment is extremely challenging and we continue to work towards our authorized strength of 33 sworn officers.

In 2015 we continued to participate with the Southwest Commercial Auto Recovery (SCAR) unit. One of our sergeants is assigned to the team on a grant and works auto theft and related cases on both the local and regional levels. This position was open for most of 2015 due to the hiring and training of new officers.

We also continued our participation with the Southwest Enforcement Team (SWET), a nine-county regional concept narcotics enforcement team supervised by the Michigan State Police. The officer assigned to SWET is on a partial grant and is our only dedicated narcotics enforcement officer. These assignments allow us to bring other police officers assigned to these teams into the Township to assist with investigations.

We work closely and collaboratively with our neighboring law enforcement agencies and other entities in the criminal justice system to bring the very best service possible to our citizens.



## **Training:**

TKPD reaffirms its commitment to provide continuous high-quality training that meets the needs of our officers and our community. Officers receive numerous hours of training in firearms, defensive tactics, scenario training, defensive driving and other forms of police related matters. In addition, all officers receive a 40-hour Crisis Intervention Team (CIT) training designed to help deescalate situations, particularly those involving people with mental health or emotional issues, and fair and impartial policing (FIP) training which is designed to make officers aware of issues surrounding the implicit bias innate to all human beings.

While the Department attempts to mitigate officer's time away by conducting most of the police training within the agency, officers are afforded the opportunity to attend various specialized schools outside the department. In November of 2016, Sergeants John Bonfiglio and Scott Jackson graduated from the Northwestern University School of Staff and Command.

## **Retirement:**

Detective Sergeant Paul Erlandson retired from the Department in September following 32 years of service. Prior to coming to the Township, he also served as a police officer for the City of Parchment and Western Michigan University.

## **Revenue**

The Department received revenue from a number of external sources and entities in 2016 in the amount of \$626,149. The receipts include the following:

### **Grants and Operational Income**

We receive grant funds and revenue from the following sources including: City of Parchment police services contract, Kalamazoo Public Schools contract for a school resource officer, Byrne Memorial Grant (SWET wages); Auto Theft Prevention Authority (SCAR wages-state source); High Intensity Drug Trafficking Area (overtime for narcotics investigations, in particular methamphetamine); Office of Highway Safety Planning (traffic enforcement overtime); and the Bullet Proof Vest Grant.

### **Wage Reimbursement**

The Department received wage reimbursement from a number of organizations, including: Western Michigan University and the Comstock Public Schools for overtime worked in conjunction with a variety of events requiring police overtime services, and the Kalamazoo Community Mental Health and Substance Abuse Services for staffing the Borgess Emergency Department during certain hours.

### Other revenue

The Department also receives revenue to a lesser extent from a number of activities including: the sale of police reports, applicant fingerprint fees, district court fines, the aforementioned OWI reimbursement and a variety of other sources of miscellaneous revenue.

### Conclusion

2016 was a successful year for the Department. We remain engaged in providing the highest possible level of professional law enforcement services to the Township of Kalamazoo and City of Parchment.

Respectfully submitted,



Chief Timothy S. Bourgeois





## **Uniform Crime Report Definitions**

The FBI's Uniform Crime Reporting (UCR) Program defines Part 1 criminal offenses as follows:

**Murder** is the willful (non-negligent) killing of one human being by another.

The classification of this offense is based solely on police investigation as opposed to the determination of a court, medical examiner, coroner, jury, or other judicial body. The UCR Program does not include the following situations in this offense classification: deaths caused by negligence, suicide, or accident; justifiable homicides; and attempts to murder or assaults to murder, which are scored as aggravated assaults.

**Forcible Rape** is the carnal knowledge of a female forcibly and against her will. Assaults and attempts to commit rape by force or threat of force are also included; however, statutory rape (without force) and other sex offenses are excluded.

**Robbery** is the taking or attempt to take anything of value from the care, custody, or control of a person or persons by force or threat of force or violence and/or by putting the victim in fear.

**Aggravated Assault** is an unlawful attack by one person upon another for the purpose of inflicting severe or aggravated bodily injury. The Program further specifies that this type of assault is usually accompanied by the use of a weapon or by other means likely to produce death or great bodily harm. Attempted aggravated assault that involves the display of—or threat to use—a gun, knife, or other weapon is included in this crime category because serious personal injury would likely result if the assault were completed. When aggravated assault and larceny-theft occur together, the offense falls under the category of robbery.

**Burglary** is the unlawful entry of a structure to commit a felony or theft. To classify an offense as a burglary, the use of force to gain entry need not have occurred. The Program has three sub-classifications for burglary: forcible entry, unlawful entry where no force is used, and attempted forcible entry. The UCR definition of “structure” includes, for example, apartment, barn, house trailer or houseboat when used as a permanent dwelling, office, railroad car (but not automobile), stable, and vessel (i.e., ship).

**Larceny-theft** is the unlawful taking, carrying, leading, or riding away of property from the possession or constructive possession of another. Examples are thefts of bicycles, motor vehicle parts and accessories, shoplifting, pocket-picking, or the stealing of any property or article that is not taken by force and violence or by fraud. Attempted larcenies are included. Embezzlement, confidence games, forgery, check fraud, etc., are excluded.

**Motor vehicle theft** is the theft or attempted theft of a motor vehicle. In the UCR Program, a motor vehicle is a self-propelled vehicle that runs on land surfaces and not on rails. Examples of motor vehicles include sport utility vehicles, automobiles, trucks,

buses, motorcycles, motor scooters, all-terrain vehicles, and snowmobiles. Motor vehicle theft does not include farm equipment, bulldozers, airplanes, construction equipment, or water craft such as motorboats, sailboats, houseboats, or jet skis. The taking of a motor vehicle for temporary use by persons having lawful access is excluded from this definition.

**Arson** is any willful or malicious burning or attempting to burn, with or without intent to defraud, a dwelling house, public building, motor vehicle or aircraft, personal property of another, etc.