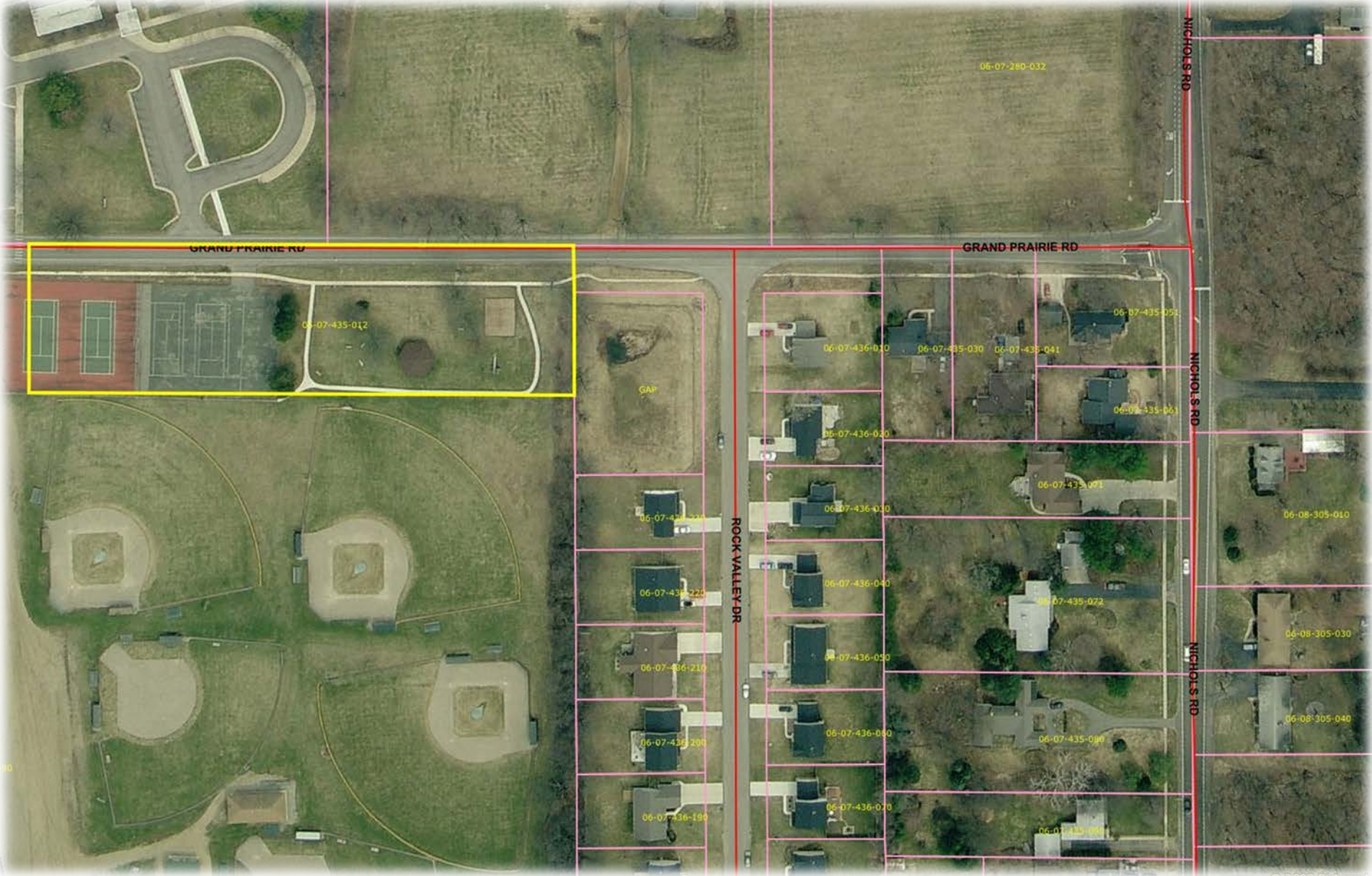


Stroud Family Park on Grand Prairie



Stroud Family Park

The 1.5 acre park offers a playground designed for young children, two tennis courts, picnic areas, a perennial garden, and parking. The park is located south of Grand Prairie Road, across from Indian Prairie Elementary School. Kalamazoo Township maintains the park. The park is one component of a larger, active recreation area that also includes eight baseball fields located south of Stroud Family Park. The Westwood Little League operates and maintains the baseball facilities.

