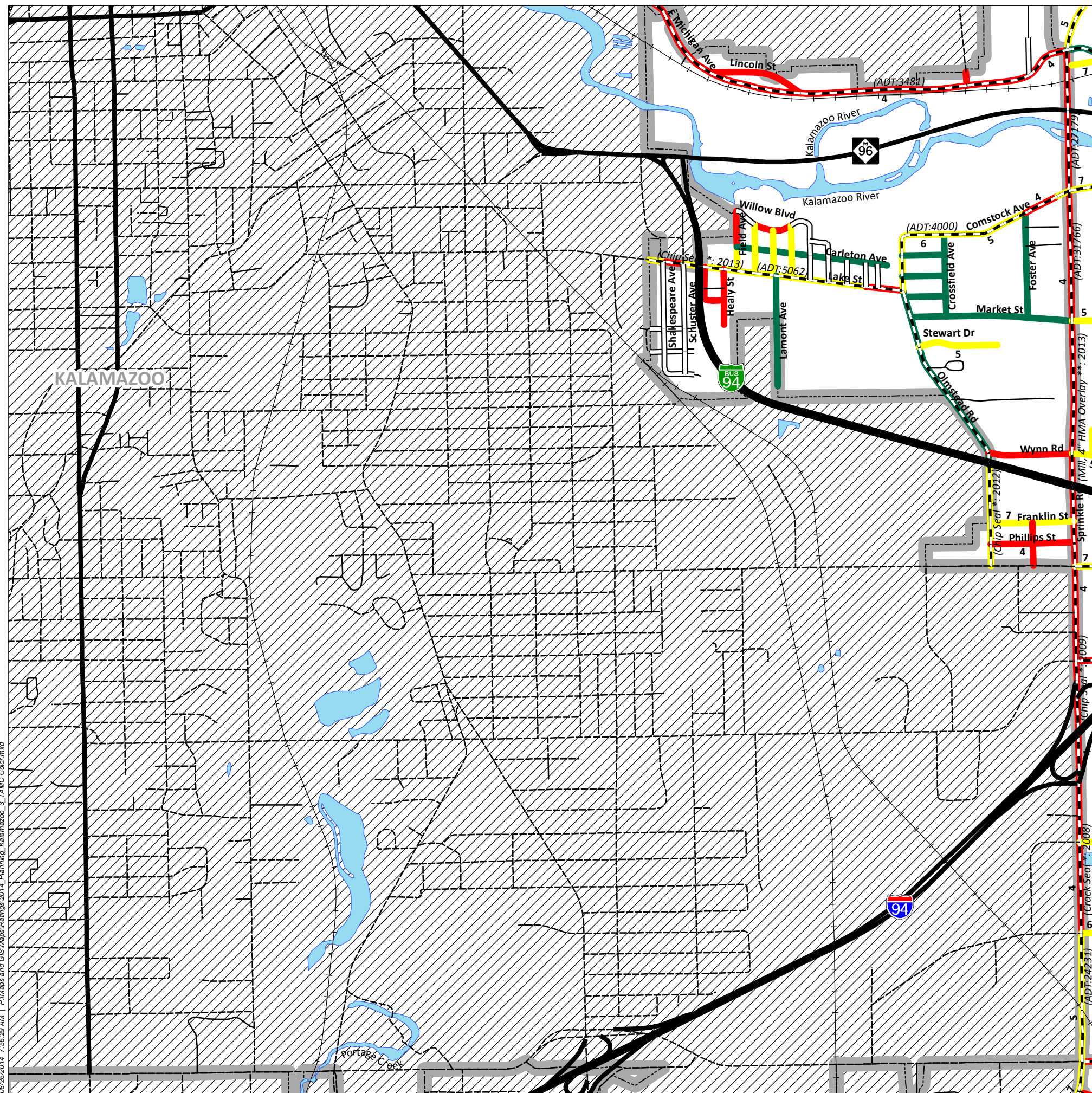






# 2014 Planning Map Kalamazoo Twp - 3




---

---

---

---

---

---

---

---

---

---

---

---

---

---

---

---

---

---

---

---

---

---

---

---

---

---

### THE RIGHT FIX AT THE RIGHT TIME

The KCRC determines the best fix to optimize service life for each of our projects. Good pavement management involves less expensive treatments earlier in the life of the pavement in order to take full advantage of infrastructural investments.

Road Classifications	Road Ratings
State Trunkline	Good (8, 9, 10)
County Primary	Fair (5, 6, 7)
County Local - Gravel	Poor (1, 2, 3, 4)
City	Private Roads (Not Rated - 0)
Private	



3801 East Kilgore Road  
Kalamazoo, MI 49001  
Ph: (269) 381-3171  
Fx: (269) 381-1760  
[www.kalamazooountyroads.com](http://www.kalamazooountyroads.com)

08/26/2014 7:56:29 AM | P:\Maps and GIS\MapRatings\2014\_Planning\_Kalamazoo\_3\_TAMC\_Color.mxd